

CTBA

Center for Tax and
Budget Accountability

70 East Lake Street
Suite 1700
Chicago, IL 60601
www.ctbaonline.org

Continued Disinvestment in IL Higher Education

Tuesday, March 29, 2022; 4:00 pm
CTBA & IRRPP
*Disinvestment in Illinois Higher Education
is a Racial Justice Issue*

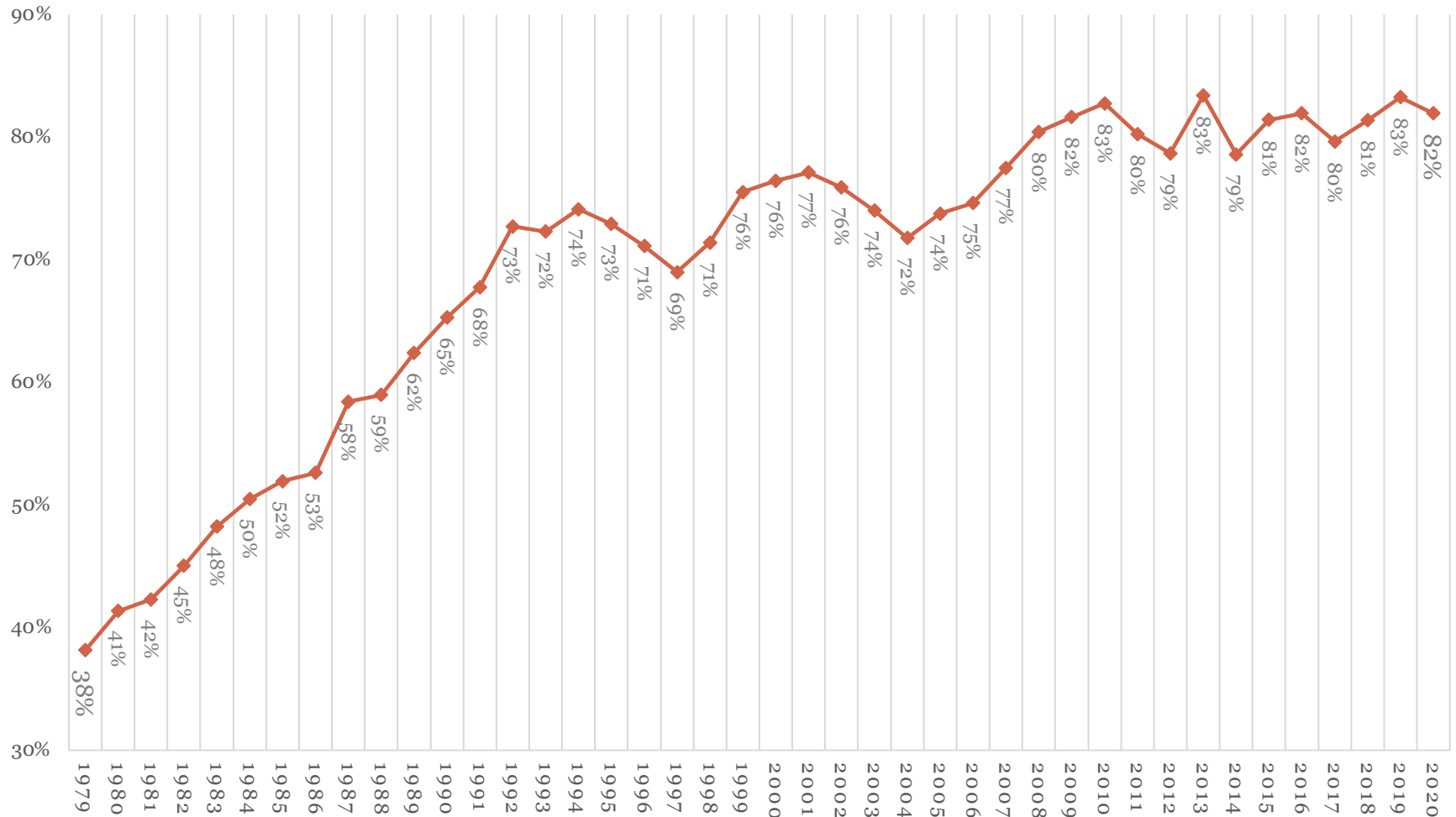
Presented by:
Ralph M. Martire, Executive Director, Center for Tax and Budget Accountability
and Arthur Rubloff Endowed Professor of Public Policy at Roosevelt University

Comparison of Weekly Earnings, 1979 to 2020, in 2020 dollars

	Less than a High School Diploma	High School graduates, no college	Some college or associate degree	Bachelor's degree and higher
1979	\$749	\$888	\$1,005	\$1,226
2020	\$619	\$781	\$903	\$1,421
\$ Change	(\$130)	(\$107)	(\$102)	\$195
% Change	-17%	-12%	-10%	16%

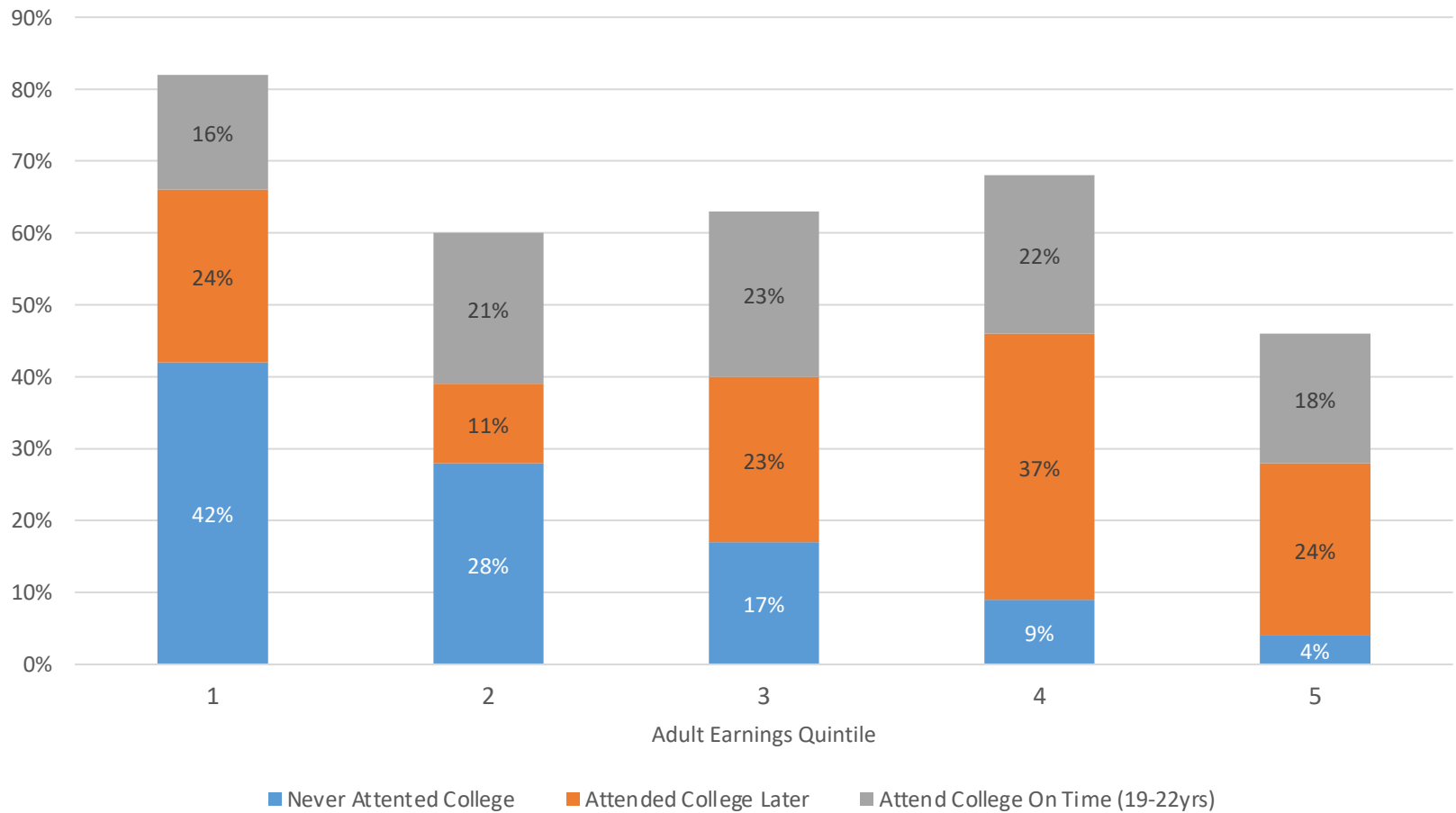
Source: CTBA analysis of Labor Force Statistics from the Current Population Survey; adjusted for inflation using historical CPI-U data

Wage Gap between full-time workers with bachelor's degree or higher & high school diploma, 1979-2020 in 2020 dollars.



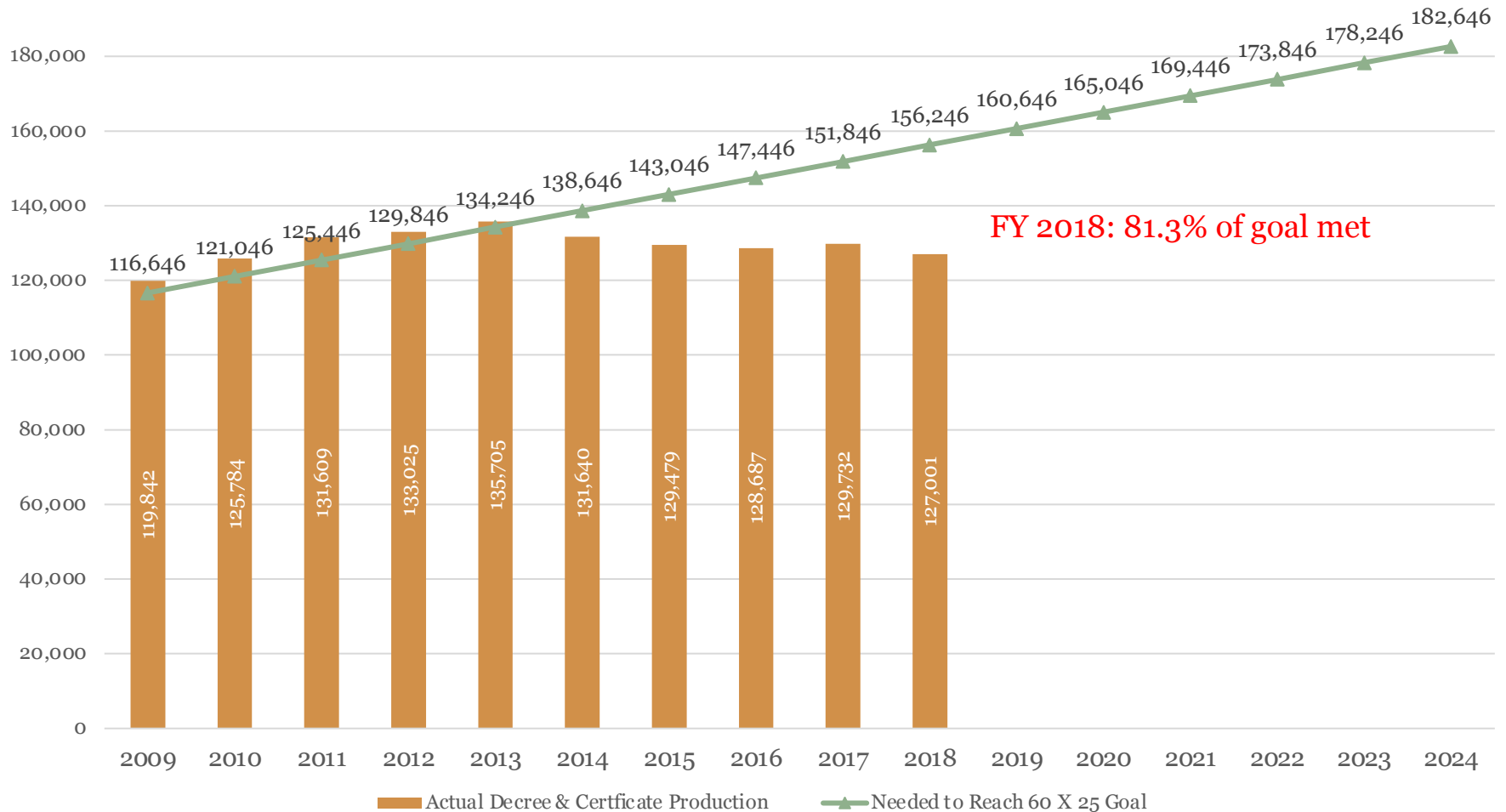
Source: CTBA analysis of Labor Force Statistics from the Current Population Survey; adjusted for inflation using historical CPI-U data

Percentage of Individuals (age 40) Who Were Born into the Bottom Income Quintile and Either Moved Into a Higher Quintile or Stayed at the Bottom, by Educational Attainment



Source: Brookings Institute, "Opportunity Engines: Middle-Class Mobility in Higher Education," May 2020

Illinois 60 Percent by 2025 Goal Progress



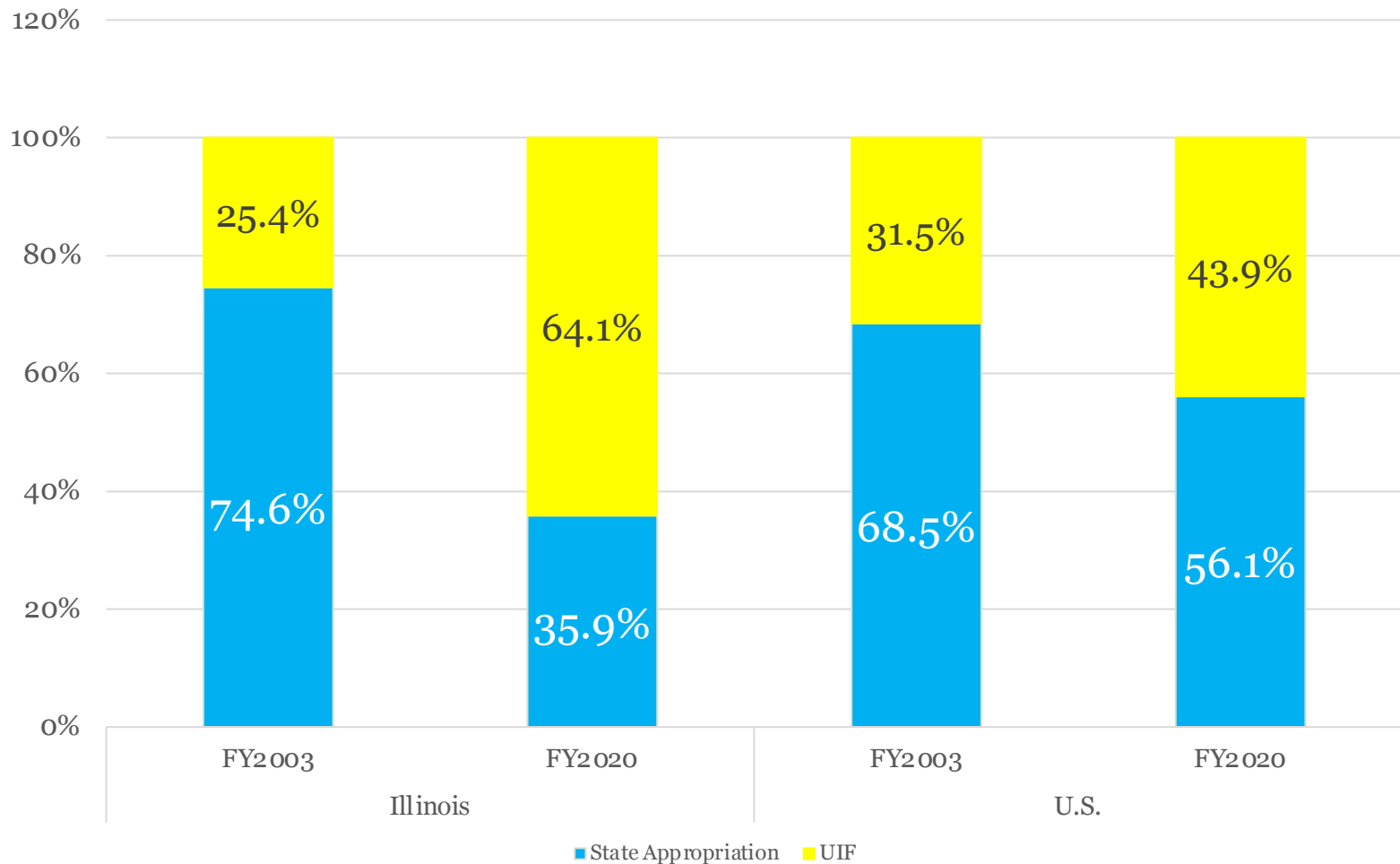
Source: Illinois State Board of Higher Education FY 2021 Higher Education Budget Recommendations, pg. 20

Illinois General Fund Spending On Core Services: FY 2022 Enacted Compared to FY 2000 Enacted (\$ Millions)

Category	FY 2000 Enacted (Nominal)	FY 2000 Enacted (inf. adj.)	FY 2022 Enacted	\$ Change (inf. adj.)	% Change (inf. adj.)
Healthcare	\$5,022	\$10,038	\$7,795	(\$2,243)	-22.35%
Human Services	\$4,599	\$8,187	\$7,384	(\$803)	-9.81%
K-12 Education	\$4,674	\$8,321	\$8,696	\$375	4.51%
Higher Education	\$2,152	\$3,831	\$1,993	(\$1,838)	-47.97%
Early Childhood Education	\$170	\$303	\$544	\$241	79.67%
Public Safety	\$1,350	\$2,403	\$1,934	(\$469)	-19.52%
Total Net General Fund Service Appropriations	\$20,064	\$35,718	\$27,802	(\$7,204)	-20.17%

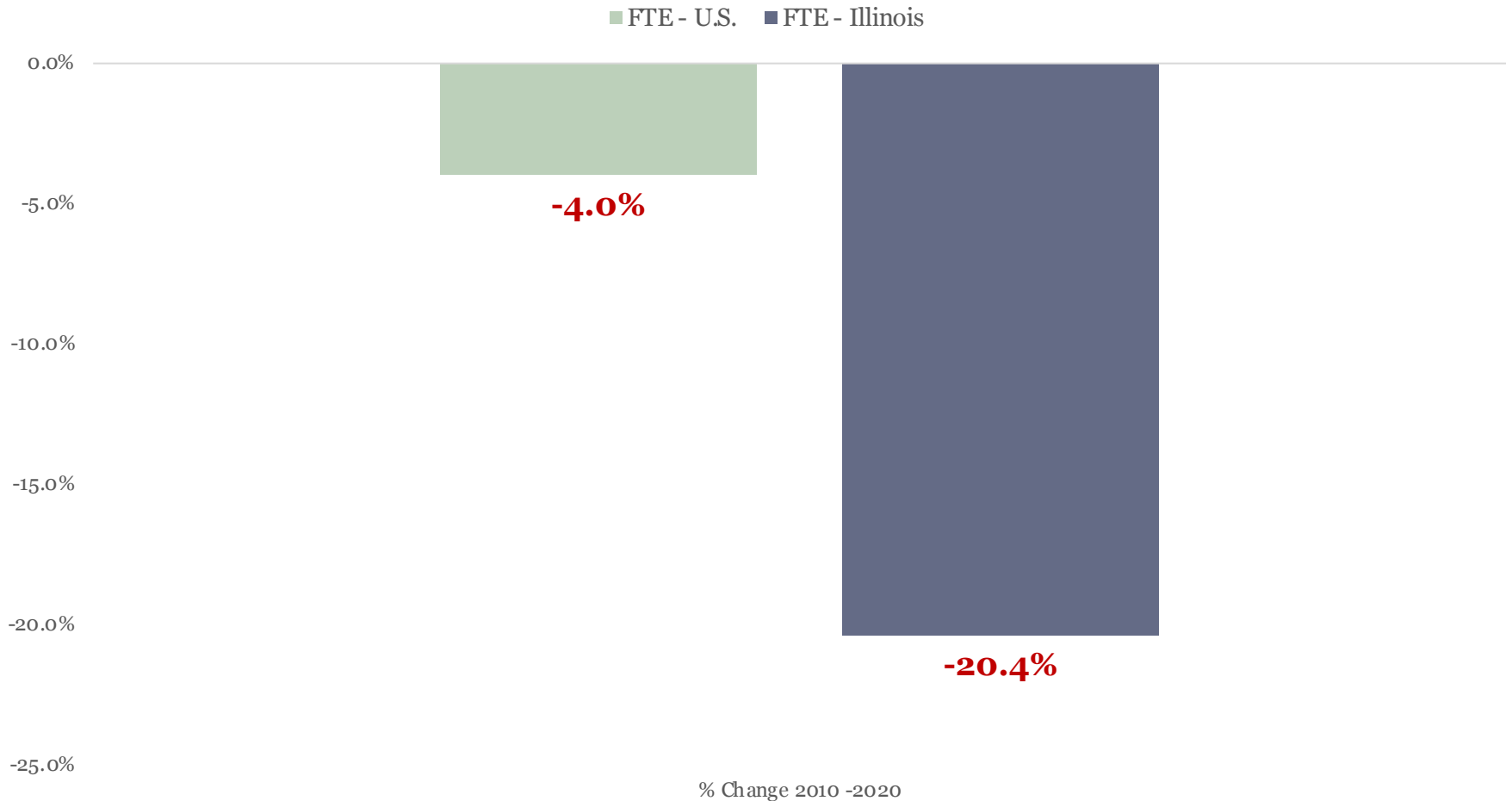
Sources: FY 2000 unadjusted appropriations from Governor's final budget summary for FY 2000; and CTBA analysis of P.A. 102-0017; Healthcare appropriations inflation-adjusted using Midwest Medical Care CPI; all other appropriations adjusted using ECI-C from the BLS and population growth from the Census Bureau

Public University Revenue by Source, FY 2003 and FY 2020



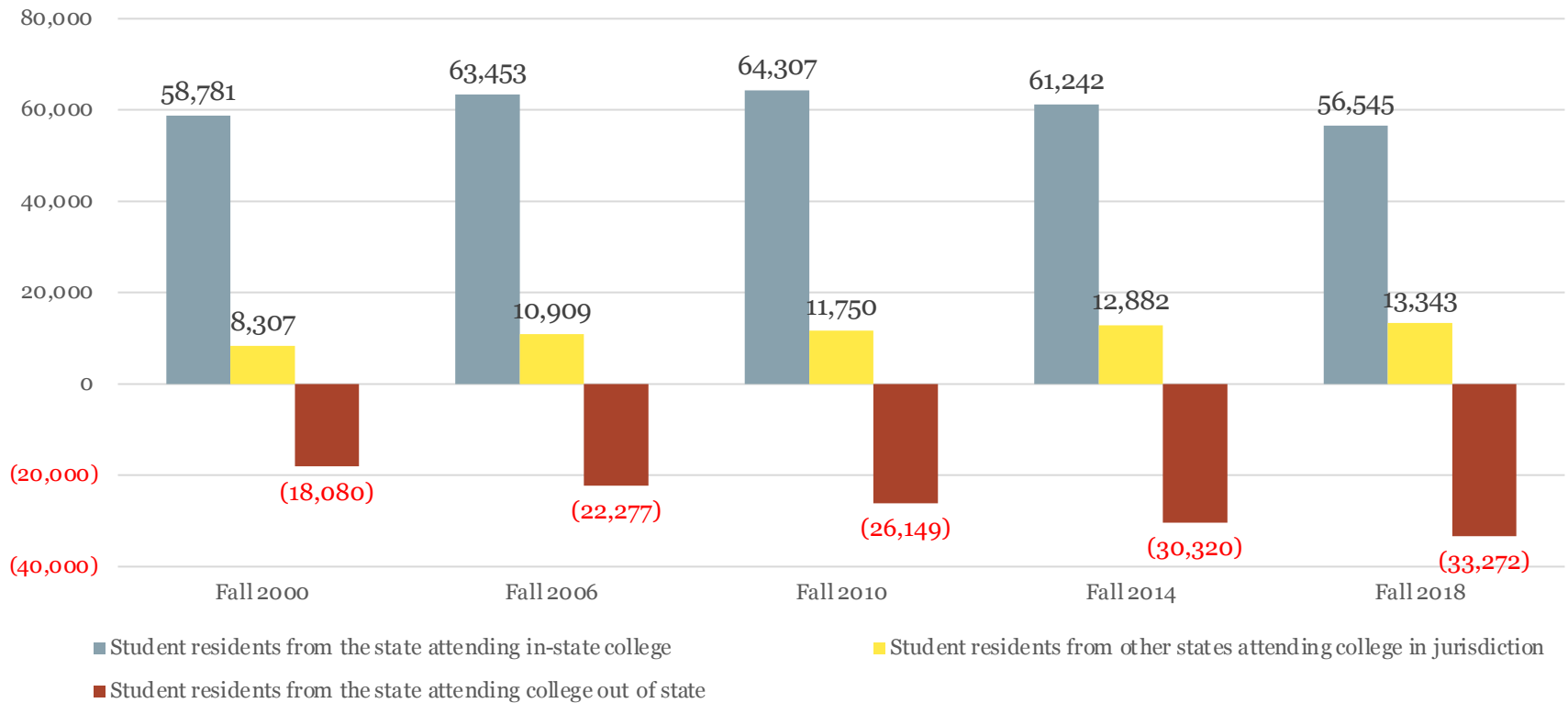
Sources: IBHE Annual Report on Public University Revenues and Expenditures: FY 2020; SHEEOA State Higher Education Finance: FY 2020

Percent Changes in Enrollment in Public Higher Education, FY 2010-FY 2020



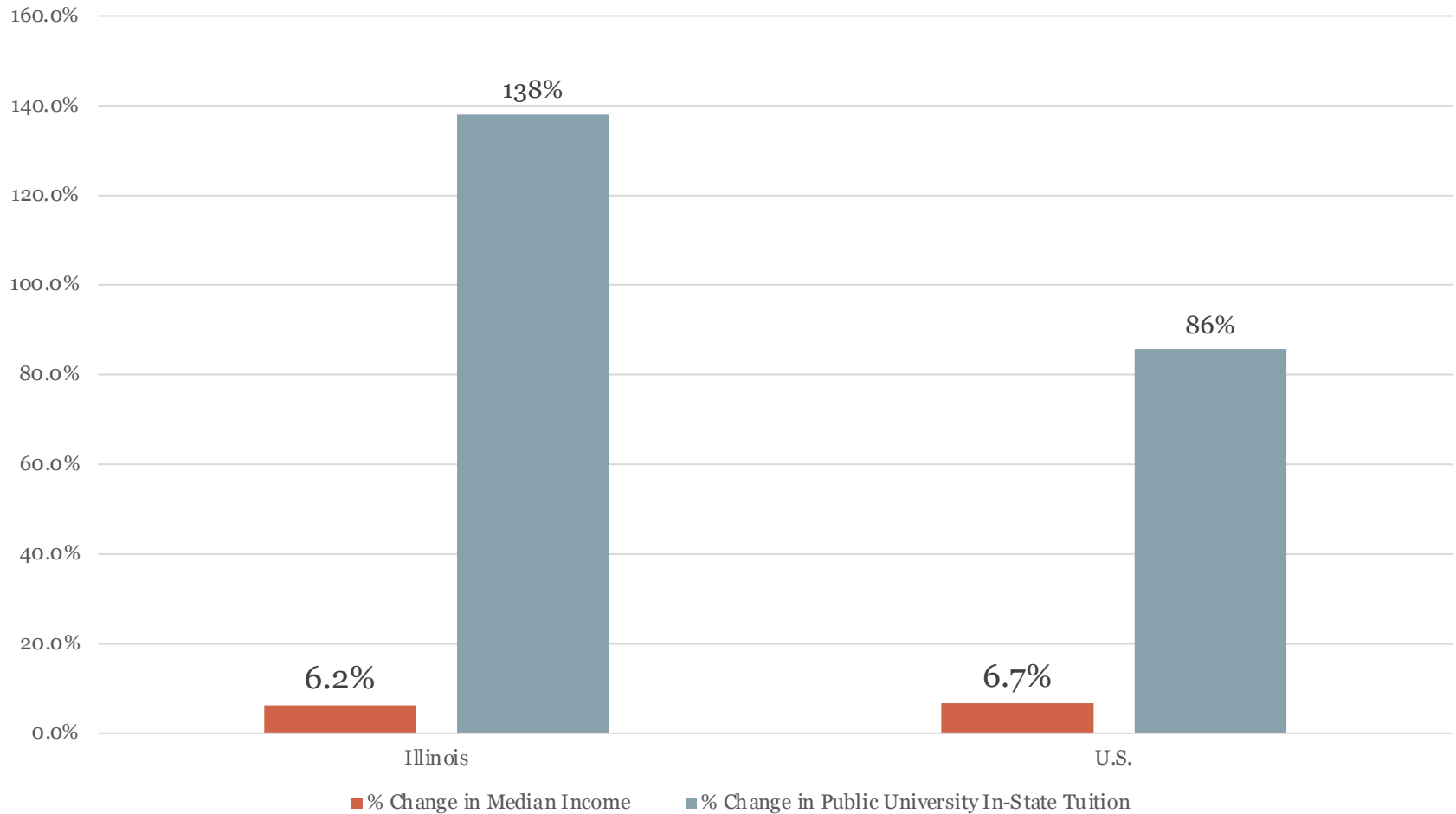
Source: State Higher Education Executive Officers Association, FY 2020 State Higher Education Finance Report

Migration of Freshmen Students into and From Illinois, FY 2001-FY 2019



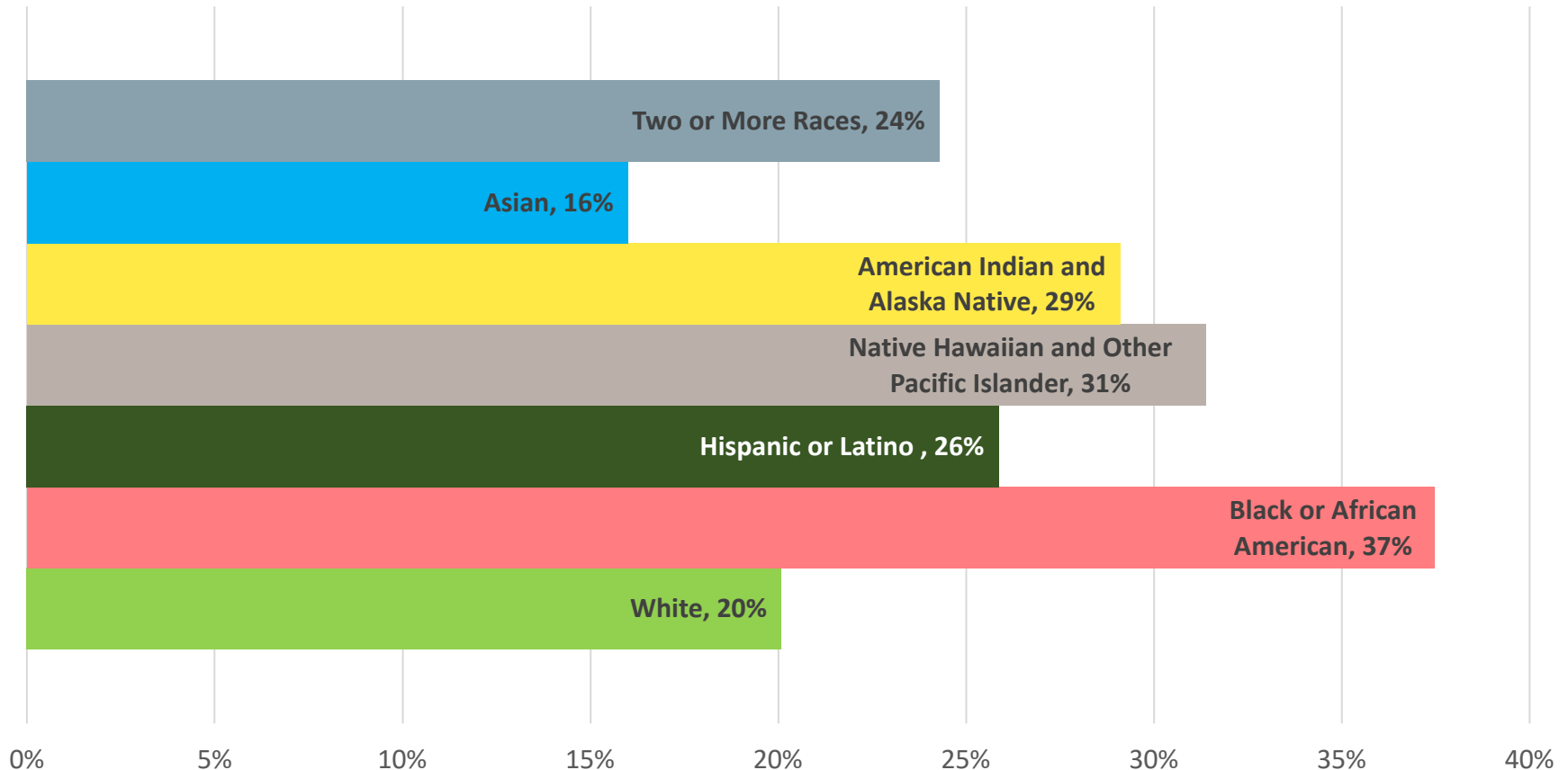
Source: NCES Digest of Education Statistics, Chapter 3: Postsecondary Education, Residence and migration of all freshmen students in degree-granting institutions graduating from high school in the past 12 months, by state, Fall 2000, Fall 2006, Fall 2010, Fall 2014, Fall 2018

Percentage Change in Median Income and Public University In-State Tuition, FY 2000-FY 2020



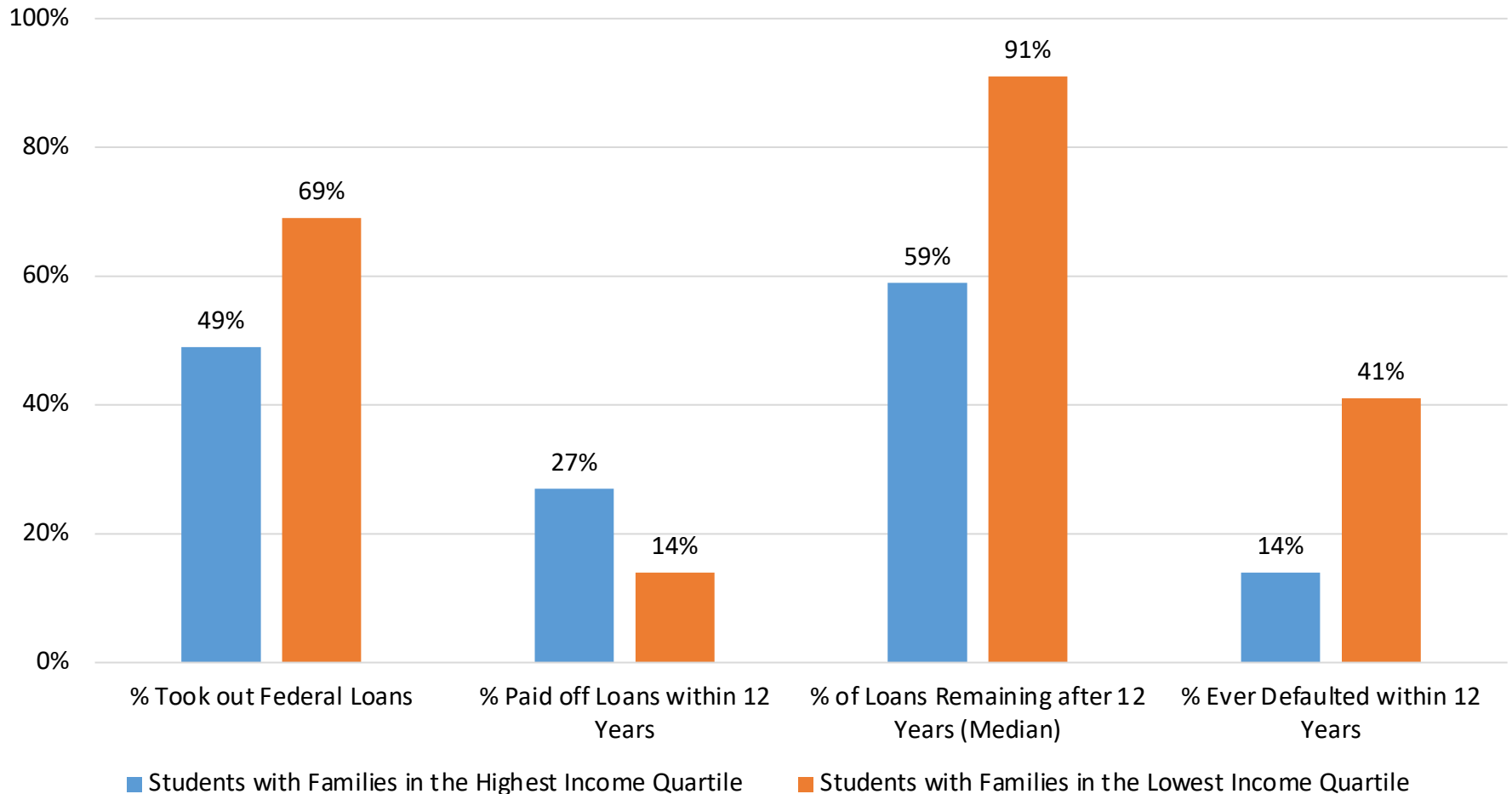
Sources: CTBA analysis of FRED St. Louis Fed Median Income data and NCES Digest of Education Statistics Table 330.20

Average In-State Tuition and Fees at a Public 4-Year University as a Share of Median Household Income in Illinois, by Race/Ethnicity, 2019



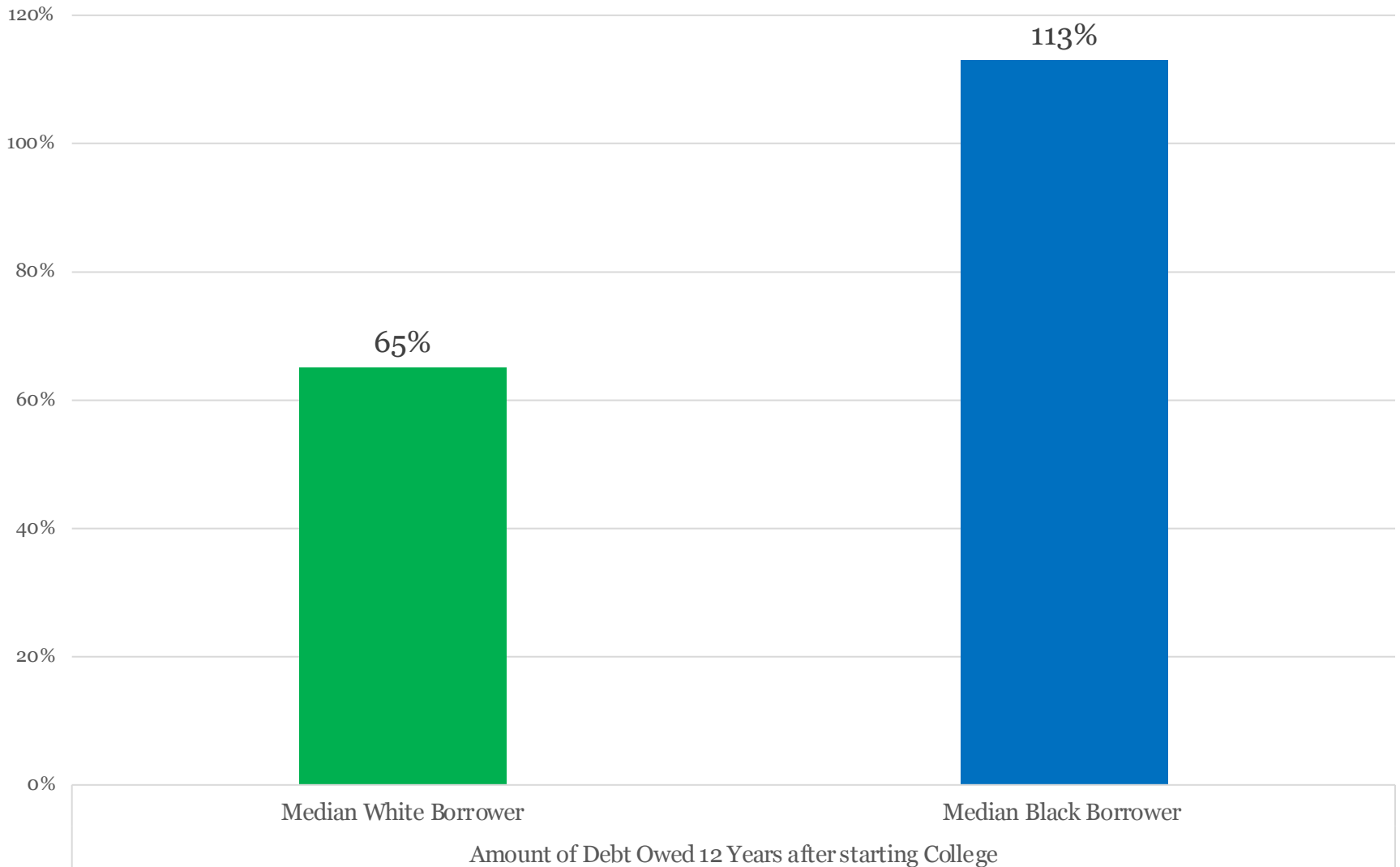
Source(s): U.S. Census Bureau, 2015-2019 American Community Survey 5-Year Estimates; U.S. Department of Education, National Center for Education Statistics, Integrated Postsecondary Education Data System (IPEDS), Fall 2018 and Fall 2019, Institutional Characteristics component; and Spring 2019 and Spring 2020, Fall Enrollment component

Student Debt and Repayment, by Family Income Quartile



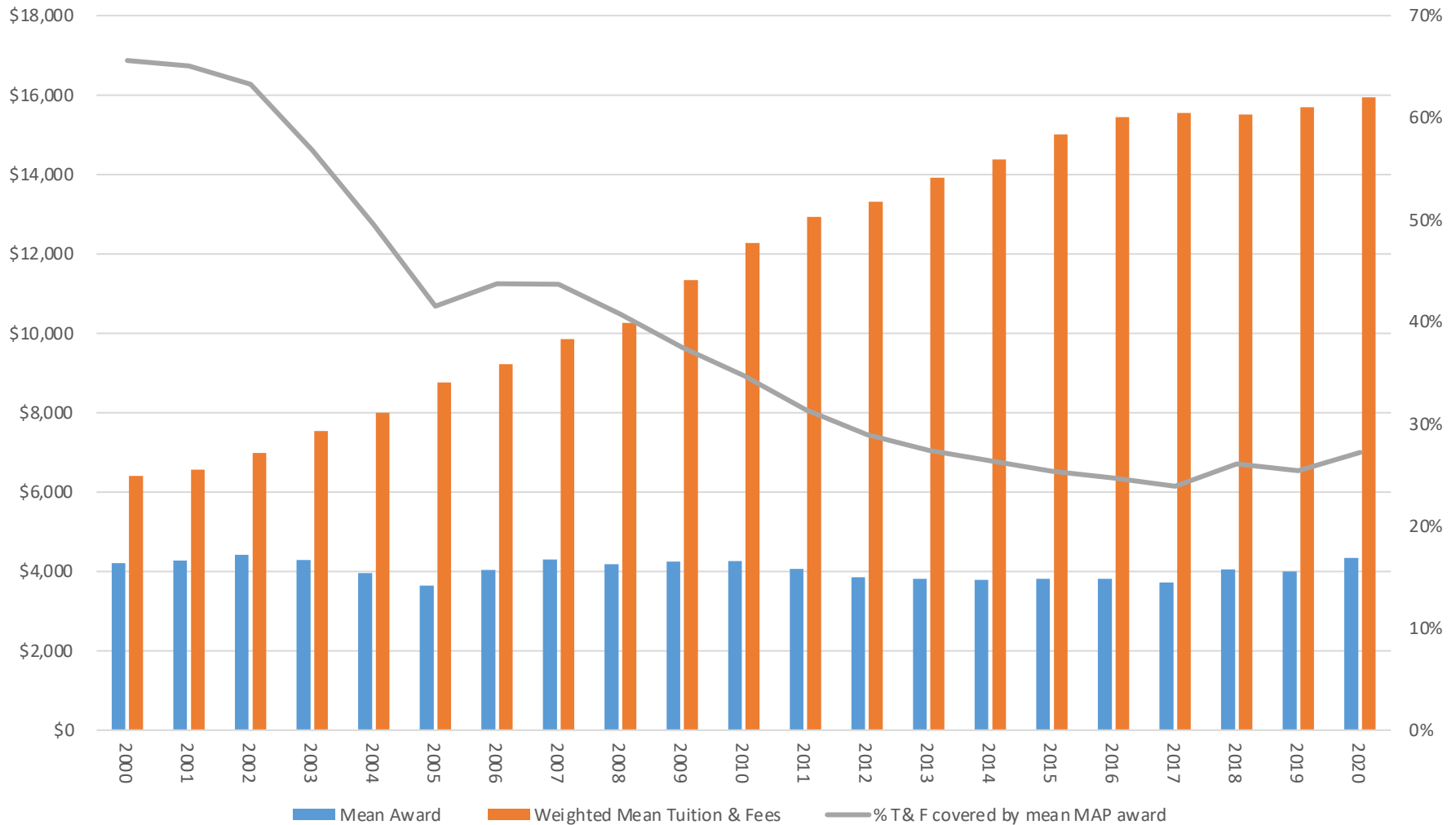
Source: NCES, *Repayment of Student Loans as of 2015 among 2003-04 First-Time Beginning Students, 2017*

Student Debt and Repayment, by Race



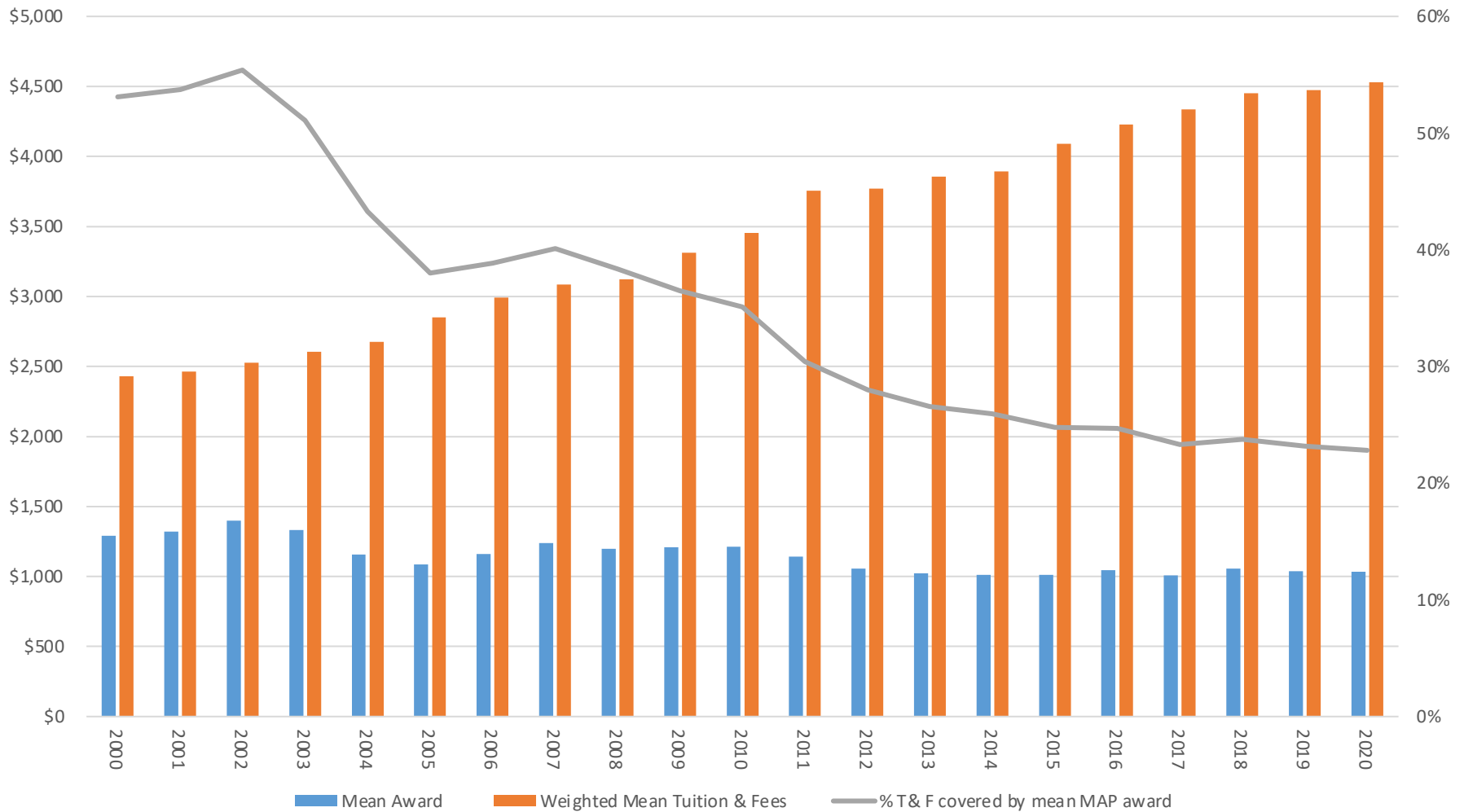
Source: NCES, *Repayment of Student Loans as of 2015 among 1995-96 and 2003-04 First-Time Beginning Students*, (Washington, D.C: October 2017).

Comparison of Public University Tuition and Fees to Mean MAP Awards, FY 2000-FY 2020



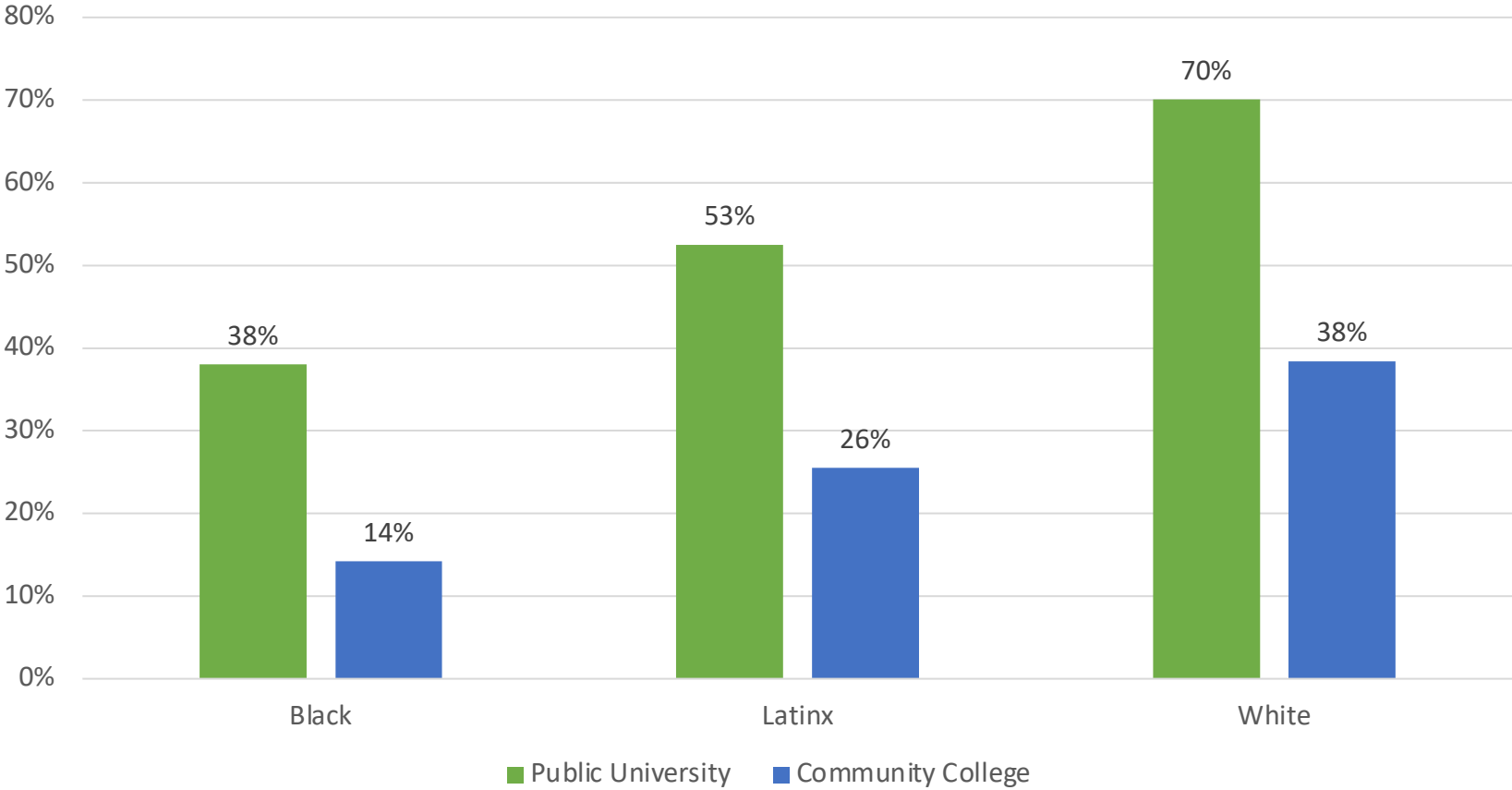
Source: Illinois Student Assistance Commission, FY 2019 Databook and FY 2020 Databook

Community College Tuition and Fees and Mean MAP Award, FY 2000-FY 2020



Source: Illinois Student Assistance Commission, FY 2019 Databook and FY 2020 Databook

College Completion by Race/Ethnicity, 2019



Source: IBHE, "A Thriving Illinois: Higher Education Paths to Equity, Sustainability, and Growth." 2021

For More Information

RALPH M. MARTIRE

Executive Director, Center for Tax and Budget Accountability and
Arthur Rubloff Endowed Professor of Public Policy
at Roosevelt University

Center for Tax and Budget Accountability

(312) 332-1049

rmartire@ctbaonline.org

www.ctbaonline.org

*CTBA's principal goal is to ensure major policy systems work to
promote social and economic justice. You can help strengthen
our efforts by making a tax-deductible donation at*

www.ctbaonline.org/donate